

### Artists

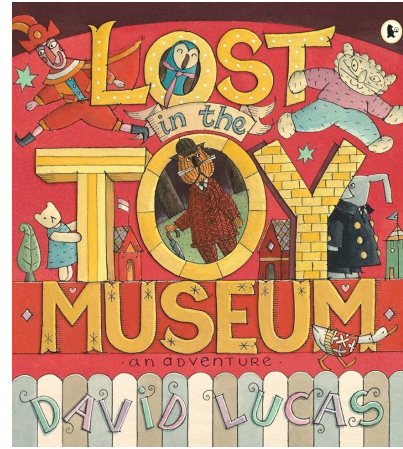
We will be using our art skills to help us represent maths and create story maps to support our learning.

We will also take part in the refu-

### Readers

We will be leaning and practicing Phonics every day, along with Cracking Comprehension in order to understand better our reading of :

Lost in the toy museum by David Lucas



### Authors

We will focus on Narrative and non chronological reports

### Mathematicians

- Multiplications and Division.
- Fractions.
- Position and direction.
- Place value.
- Money.
- Time.

Starling class

Curriculum map

Term 6 2023-2024



Willow Park  
C of E Primary School

*How could we play in different ways?*

### Philosophers

JIGSAW

This term we are thinking about "Changing me":

- Life cycles.
- Boys' and girls' bodies
- Learning and growing.
- Understand and respect the changes that happens.
- Know how to ask for help if

### Athletes

PE days are Monday and Wednesday this term. Please arrive at school dressed in your PE kits.

Our Wednesday PE sessions will be provided by Bristol Progressive Sports

### Historians

*- develop an awareness of the past using common words and phrases*

*related to the passing of time;*

*- use a wide vocabulary of everyday historical terms;*

*- ask/answer questions, choosing and using parts of stories and other*

*sources to show they understand key features of events;*

### Theologians

**CREATION – Understanding Christianity**

**Who made the world?**